



# SMTECH SHIP MANAGEMENT

The Pursuit of High Quality, Safety,  
and Maintenance considering cost-efficiency



# Contents

01. Overview

02. Corporate Identity

03. Brief History

04. Safety Management Motto

05. Organization

06. Certification

07. Company SHEQ Policy

08. Company SHEQ Objectives

09. Partners

10. SMTECH SHIP MANAGEMENT for SHEQ Management

11. Managing Vessels as of March 2023

12. Crew Pool

# OVERVIEW

## An Ounce of Prevention is Worth a Ton of Cure

2010년 2월에 재 창립된 저희 에스엠텍선박관리(주)는 당사의 경영 방침인 '유비무환(有備無患)을 기본정신으로 당사의 최고 목표인 안전운항을 달성하기 위해 체계적인 선박 관리 시스템 구축을 통해 끊임없이 선박 관리 서비스 품질을 향상시켜왔습니다.

Total 선박 관리 전문 회사로 출범 후 2023년 3월 현재 상선 30척을 관리하는 회사로 명실 공히 국내 최고 수준의 선박 관리 전문 회사로 발돋움 하고 있습니다.

젊은 열정과 패기, 끊임없는 도전을 성장 동력으로 World Top Class 수준의 선박 관리 전문 회사로 도약하여 가고 있으며, 임직원 모두가 혼연일체가 되어 꿈과 미래를 개척해 나아가고 있습니다.

회사명	에스엠텍선박관리주식회사
대표이사	임용준
주업종	선박관리
설립일	2002.06
주소지	RM.1510, Byucksan e-Centum Class One II Bldg, 71 Centum dong-ro, Haeundae-gu, Busan, 48059, Republic of Korea

## SMTECH SHIP MANAGEMENT

The Pursuit of High Quality, Safety,  
and Maintenance considering  
cost-efficiency



## Greetings from SMTECH SHIP MANAGEMENT

I would like to express my deep gratitude to all of you for supporting our company.

Since we re-established in February 2010, our company has substantially improved the quality of ship management services through the establishment of a systematic ship management system to achieve our highest goal, safe operation, with the basic spirit of our management policy.

SMTECH Ship Management, as a total ship management company, endeavours to become a company with a high level of professional ship management skills, systems with continual improvement and competent personnel.

We are making a leap into a world top class level with passion, spirit, and constant challenges as the driving force of growth, and all executives and employees will unite to pioneer dreams and the future.

Capt. Im, Yong-jun  
President

SMTECH Ship Management Co., Ltd.



# Corporate Identity

## CI IDEOLOGY

VESSEL

PREVENTION

SAFETY

STABILITY

TECHNOLOGY



The square surrounding the checkmark is 'Anchor Chain' and signifies a ship.



This 'Check Mark' signifies the company's motto 「An ounce of prevention is worth a ton of cure(有備無患)」 for preventive action in advance by checking and identifying the elements necessary for the safe operation of the ship.

The lines signify 'Stability' and the orange color in the middle of the lines signifies 'Safety'.

Adding the word "Technology" implies a commitment to constantly improve ship management Technology to meet customer's needs and become a company specialized in ship management.

# Brief History



2010. 02. 01.

SMTECH Ship Management Co., Ltd.

- Changing the company name.
- Business Field : Total Ship Management service.

2007 ~ 2010

LAURUS Ship Management Co., Ltd.

- Business Field : Total Ship Management service.

2002. 06. 01.

LAURUS Ship Management Co., Ltd.

- Business Field : Safety Management for ship owners, ISM boarding inspection.

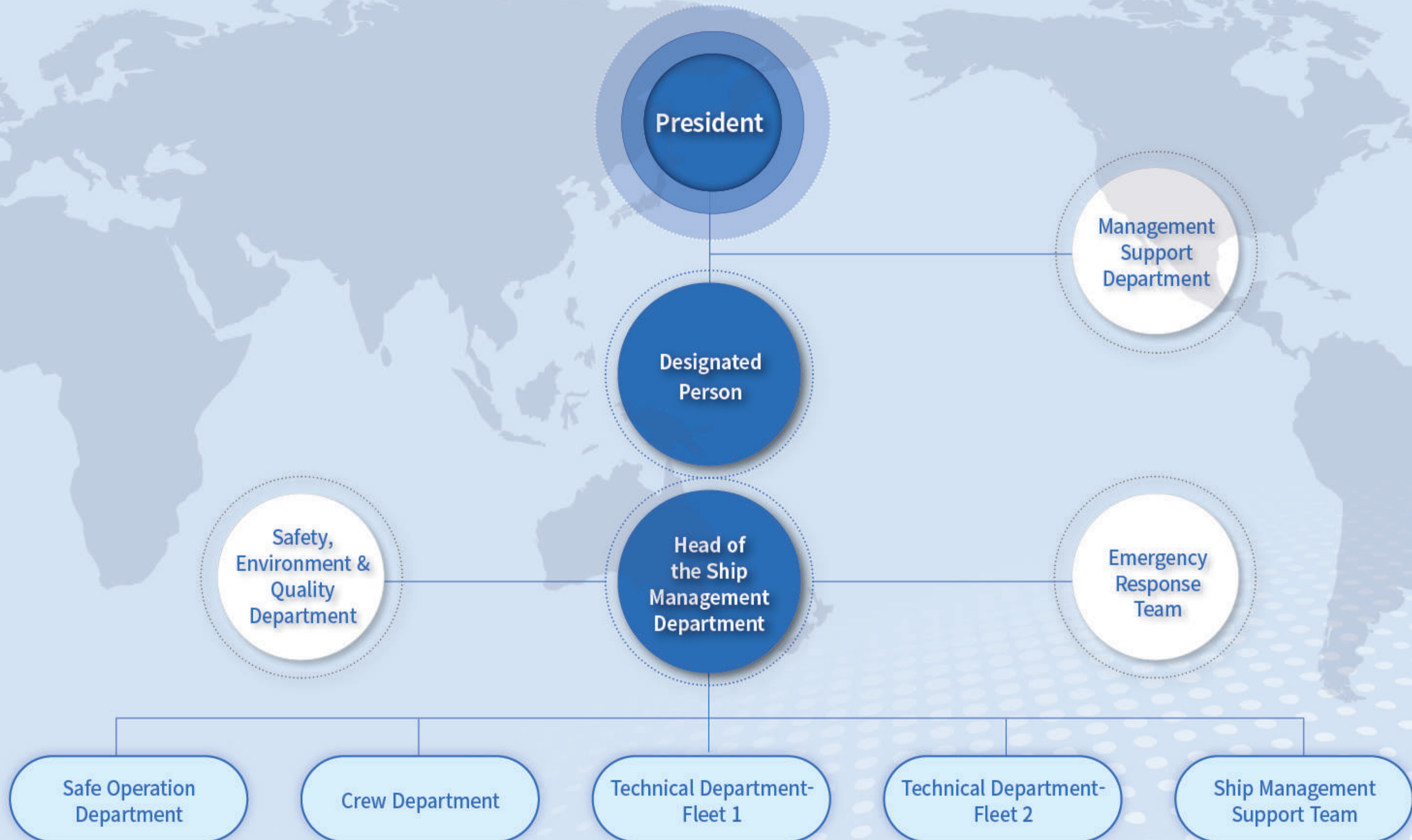


# Safety Management Motto

“An Ounce of Prevention is worth a Ton of Cure”



# Organization





# Certification

## ISM CODE (International Safety Management Code)

## ISO (9001, 14001, 45001)



Document of Compliance (Panama)



Document of Compliance (Liberia)



Quality Management System (ISO 9001)



Environment Management System (ISO 14001)



OH&S Management System (ISO 45001)



# Company SHEQ Policy



Through Safety, Health, Environment and Quality Management, identifying all risks related to vessel, person and environmental incidents and do preventive measure in order to prevent incidents including serious accidents

Through Customer Satisfaction Management, providing services that satisfy customers by identifying customer's requirements

Through Trust and Ethics based Management, working under transparent and honest communication to make sure reliable relationship

Through Security Management, protecting people, assets and ship from possible security vulnerability by criminals, violation acts

All employees comply with requirements of Safety, Health, Environment and Quality Management and Carry out continuous improvement of the Management system

***Safety, Health, Environment and Quality***

# Company SHEQ Objectives



Minimize the occurrence ratio of Marine Accident

Minimize the occurrence ratio of Crew Injury Accident and Achieve Zero Fatality

Minimize the occurrence ratio of Environmental Pollution Accident

Encourage to report a near-miss accident and provide analysis

Minimize PSC deficiency ratio and Achieve Zero Detention

Minimize the occurrence ratio of the Non-Conformity of compliance obligations and management system

Minimize the occurrence ratio of Security Incident

Minimize the occurrence ratio of Customer's complaints

Provide various information including preventive measures of accident and quick and close communication between ship and shore

***Safety, Health, Environment and Quality***

# PARTNERS

We have honed to handle the challenging jobs of ship management with professional superintendents who have long years experienced on board as senior officer and engineer, and supervised various types of vessels ever since we started.

Exclusive ship management service for



SHOEI KISEN KAISHA, LTD.



**SMT**  
*Ship Management Technology*

With Professional staff having various experiences as senior seafarers, technical engineers and managers etc.



# SMTECH SHIP MANAGEMENT For SHEQ Management



Pre-joining Training & Education



Drill & Exercise onboard



Regular Safety meeting



Dock repair supervision

**ZERO ACCIDENT! ZERO FATALITY!**

# SMTECH SHIP MANAGEMENT For SHEQ Management

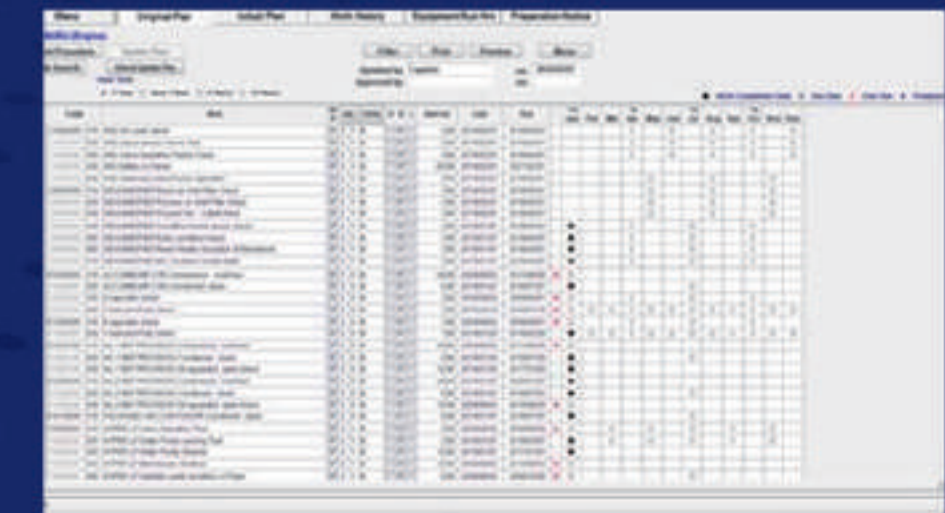
We appointed PIC with professional mindset on each ship and that makes it possible for us to take prompt actions to customer's requirements.



Integrated monitoring & analysis system (VW, WNI AEDYN)



PSC preparation & analysis (NK Primeship)



PMS (CMAXS PMS)

# SMTECH SHIP MANAGEMENT For SHEQ Management



# SMTECH SHIP MANAGEMENT For SHEQ Management

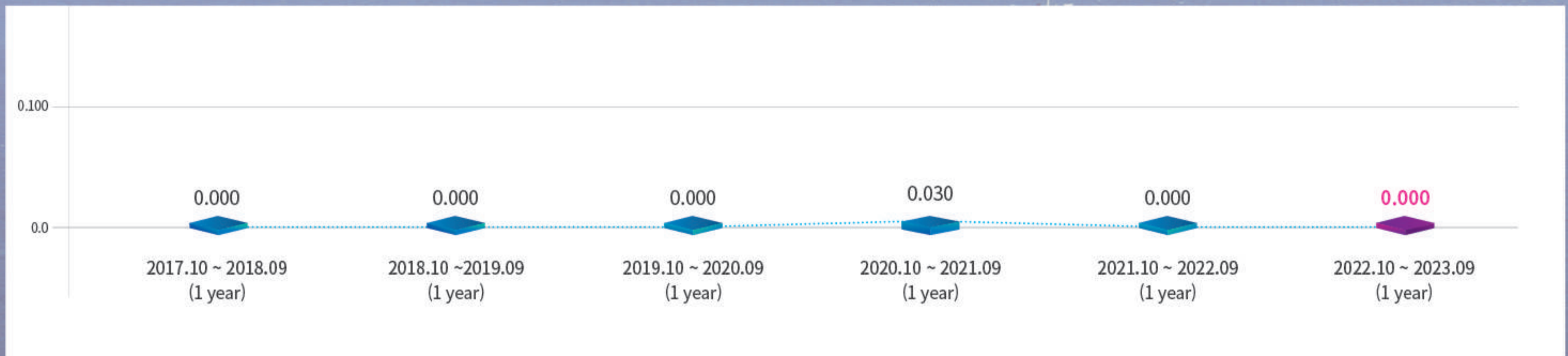
By supplying ship products with excellent quality and price competitiveness through thoroughgoing comparing, reviewing, and selecting products from domestic and foreign supply providers, we are securing a high level of ship operating safety.





# PSC Inspection Performance

## PSC Detention rate 2017~2023



# MANAGING VESSELS AS OF OCTOBER 2023

30 vsls

1,871,634 DWT

As of October 2023

## BULK Carrier (20)



37 ~ 38BC

5

61 ~ 64BC

8

81 ~ 82BC

4

95BC

1

207BC

1

40BC

1

## CONTAINER Carrier (10)



2.0 ~ 2.4K

8

11K

2

# Crew Pool



- Indian
- Filipino
- Indonesian
- Bangladeshi



Crew Retention Ratio	Indian	Filipino	Indonesian	Bangladeshi
2020	-	84.25%	96%	-
2021	-	86.5%	89%	-
2022	78%	86.25%	86%	91%

## Manning Companies



BOUVET



ESM



HAQUE & SONS



PT. JASINDO



PT.KSM



LEONIS



SANTOKU



SOLPIA



TOEI JAPAN



WORLD MARINE



## Where to Find Us



### Busan Office

RM.1510, Byucksan e-Centum Class One II Bldg,  
71 Centum dong-ro, Haeundae-gu, Busan, 48059,  
Republic of Korea

48059 부산광역시 해운대구 센텀동로 71, 1510호  
(벽산e-센텀클래스원II)



Tel +82-51-441-5095

Fax +82-51-441-5094



E-mail [smtech@smtechsmc.com](mailto:smtech@smtechsmc.com)

Homepage <http://www.smtechsmc.co.kr>